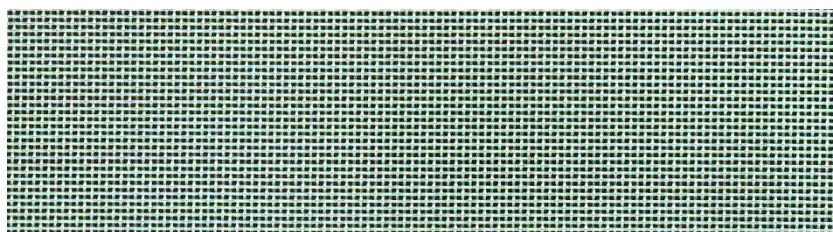




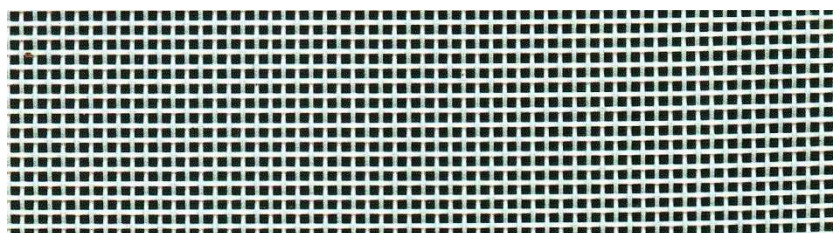
NASTRI A RETE

Tipo	Larghezza maglie	Colore	Ø filo	Area Aperta
PE 1000 HD	1000	Bianco	0,6	44%
PE 2000 HD	2000	Bianco	1	42%
PE 3000 HD	3000	Bianco	1	53%
PE 4000 HD	4000	Bianco	1	61%
PTFE 4000	4000	Marrone	1	61%
LS800	800	Blu	0,8	25%
LS1000	1000	Blu	1	31%
LS2000	2000	Blu	1	42%
LS3000	3000	Blu	1	53%
LS4000	4000	Blu	1	61%

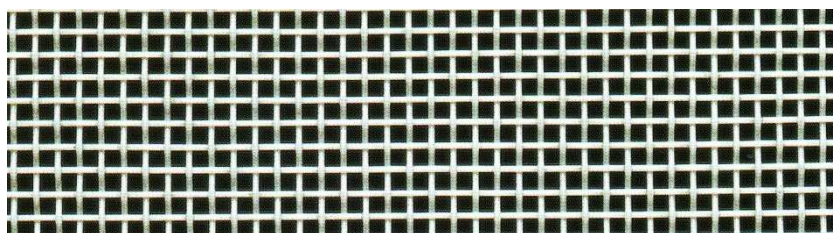
1000



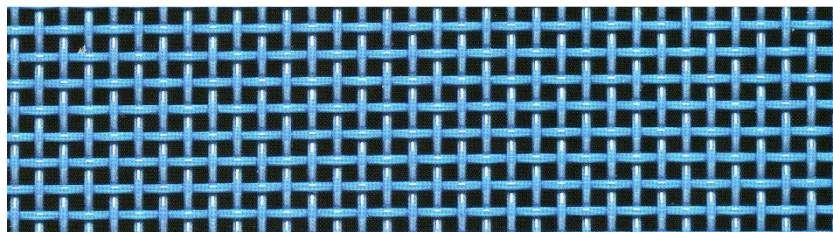
2000



3000



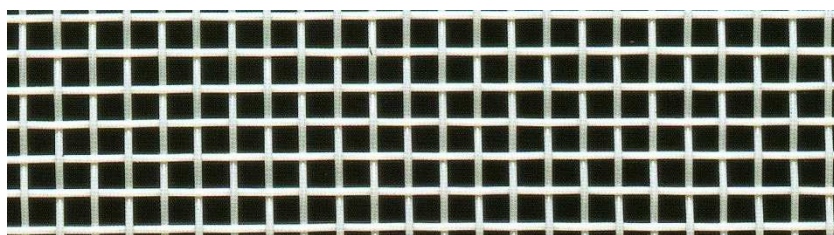
3000



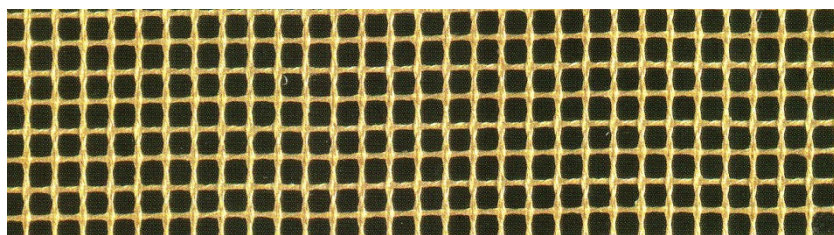


NASTRI A RETE

4000



PTFE 4000



Materiali delle reti: Poliestere con accessori in PVC e Poliuretano
Fibra di vetro impregnata di PTFE (teflon).

Rinforzi perimetrali: in PVC o Poliuretano in larghezza da 25 a 50 mm.

Giunzione vulcanizzata o metallica.

Ø min.: 80 mm. per reti in poliestere e 150 mm. per reti in PTFE.

Temperature d'esercizio: da -10 +110 con bordi in PVC
da -40 +100 con bordi in Poliuretano
da -55 +260 vetro PTFE